

INSTRUCTIONS: CARBIDE STUD SHARPENING TOOL - PRO SERIES

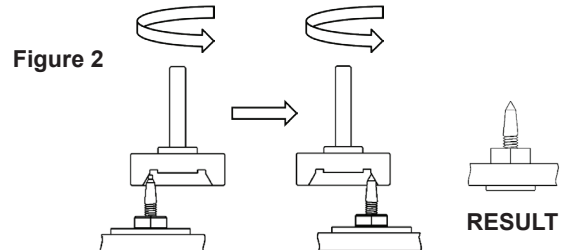
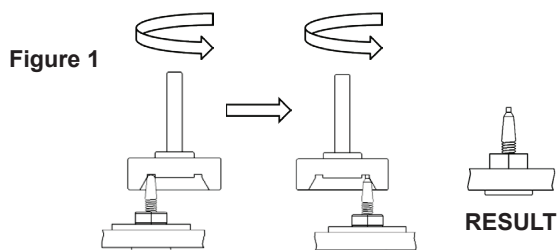
Congratulations on the purchase of your BITEHARDER® Diamond Coated - Professional Series Carbide Stud Sharpening Tool. This product is handmade in the U.S.A. with quality materials. All components are carefully machined from stainless steel to the highest quality standards, on state of the art manufacturing equipment, and diamond coated using a proprietary braze process, to assure you get the most life out of your tool.

Our Professional Series tools are designed to run at significantly higher speeds than our Standard Series tools (10,000 RPM's plus). Running your tool at less than the recommended RPM's will only help to shorten its useable life. This tool is designed to re-sharpen all of the carbide studs in your track in the fastest time possible.

Like all cutting tools, the product will wear out over time and will need to be replaced. By following these simple instructions, you will maximize the effectiveness and longevity of your BITEHARDER® Professional Series Carbide Stud Sharpening tool.

INSTRUCTIONS:

1. Properly attach your sharpening tool to the chuck of a corded or cordless electric die grinder which will accommodate a 1/4 inch shank. Set the grinder's speed to 10,000 RPM's or greater (the faster the better).
2. With the tool spinning, gradually place the tool over the carbide stud until it contacts the bottom inside surface of the BITEHARDER® sharpening tool and rotate the tool around the carbide stud in a continuous, uniform circular motion, **IN THE OPPOSITE DIRECTION FROM WHAT THE TOOL IS SPINNING**. You will become more efficient with each stud you sharpen. This is the first stage of the sharpening process which removes the host material, exposing the carbide stem (**Figure 1**).
3. Once the required material is removed, and the carbide stem is exposed, back the tool slightly away from the stud and again using a continuous uniform circular motion, rotate the grinder around the exposed carbide stud tip, **IN THE OPPOSITE DIRECTION FROM WHAT THE TOOL IS SPINNING**, to sharpen the carbide stud tip (**Figure 2**).
4. After the appropriate amount of sharpening time, inspect the stud for the required results. Repeat this process by indexing the track to access the remaining studs.



FOR BEST RESULTS:

- PRO tools are designed to run at 10,000 RPM's or faster. **BITEHARDER®** does not recommend the use of pneumatic grinders due to the amount of air pressure required. Running your PRO tool slower than 10,000 RPM's will cause your tool to wear prematurely.
- The **BITEHARDER®** sharpening tool should be held parallel to the carbide stud at all times.
- Do not twist or angle the grinder during the sharpening process.
- A smooth and consistent motion of the grinder attached to the **BITEHARDER®** sharpening tool is important to achieve the sharpest tip possible. Light pressure is all that is required – **LET THE DIAMONDS DO THE CUTTING!** Too much pressure will only help to wear your tool prematurely.
- If required, keep the **BITEHARDER®** sharpening tool cool by adding water or snow to the process.
- Never let the tool grab or kick-off the stud being sharpened. This could damage the tool and the stud.
- Frequently inspect your **BITEHARDER®** sharpening tool for wear, as a worn tool is not effective.
- You can also check out our YouTube channel to see updated videos detailing the sharpening process.

SAFETY WARNINGS:

- Never place any part of your body into contact with the **BITEHARDER®** sharpening tool during use.
- Never wear jewelry, neckties, or loose-fitting clothing when using the **BITEHARDER®** sharpening tool.
- Long hair should be tied back before using the **BITEHARDER®** sharpening tool.
- The **BITEHARDER®** sharpening tool can produce excessive noise during operation and hearing protection should be worn. See "Carbide Dust Warning" below.
- The **BITEHARDER®** sharpening tool and carbide stud may become hot during use and can cause burns if touched.
- Improper use of the **BITEHARDER®** sharpening tool may cause it or the carbide stud to fracture. Always wear proper protective clothing and equipment, including face, eye, and tight fitting hand protection.

CARBIDE DUST WARNING:

Grinding or sharpening carbide will produce a dust of potentially hazardous ingredients which can cause nose, throat, skin and eye irritation and possible temporary or permanent respiratory disease in a small percentage of exposed individuals. Permanent respiratory disease can lead to disability or death. Take precautions and avoid breathing dust. Avoid prolonged skin contact with dust. Always use adequate ventilation when grinding or sharpening. Use protective devices such as an appropriate mask/respirator and appropriate eyewear at all times. Immediately wash hands thoroughly after each use.